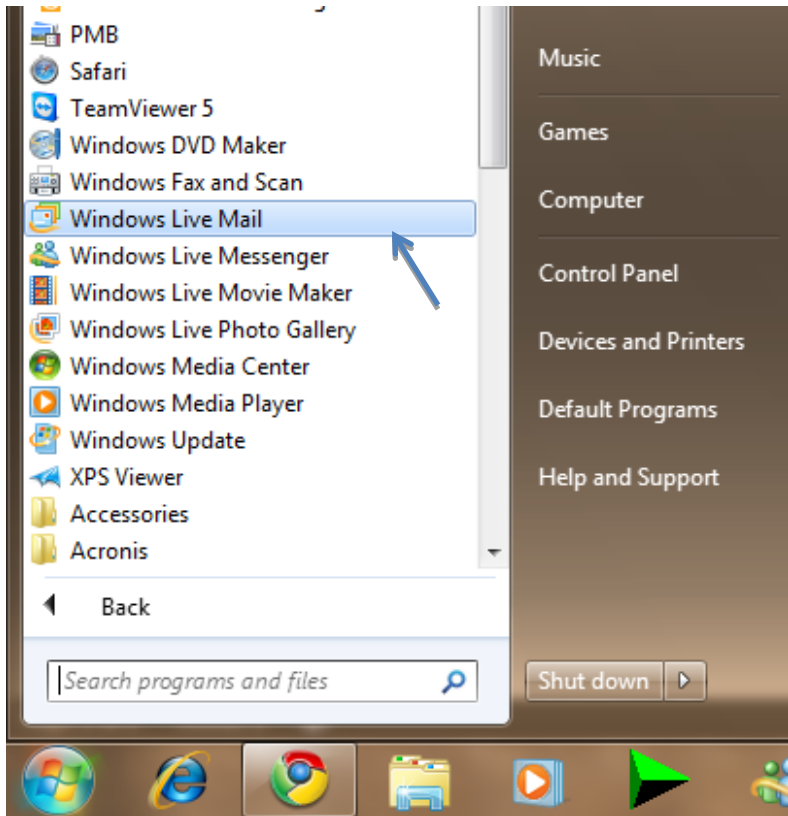
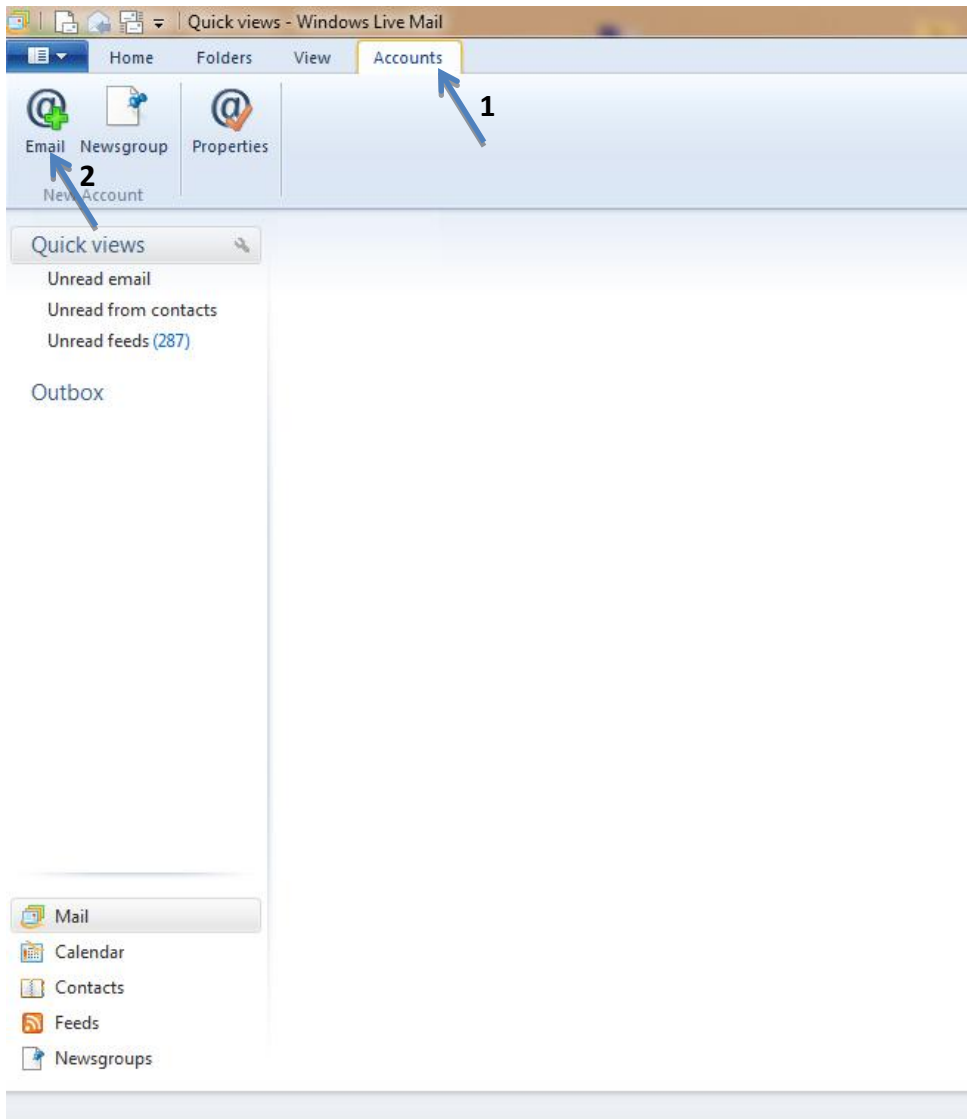


Open Windows Live Mail



Click on Accounts tab (1)

Click on Email (2)



Fill all the fields and make sure you select "Manually configure server settings"

Windows Live Mail

Add your email accounts

Email address:

[Get a Windows Live email address](#)

Password:

 Remember this password

Display name for your sent messages:

Manually configure server settings

Most email accounts work with Windows Live Mail including
Hotmail
Gmail
and many others.

Cancel Next

Enter in the 'Server address' field under 'incoming server information' pop3.(your state).exemail.com.au (1)

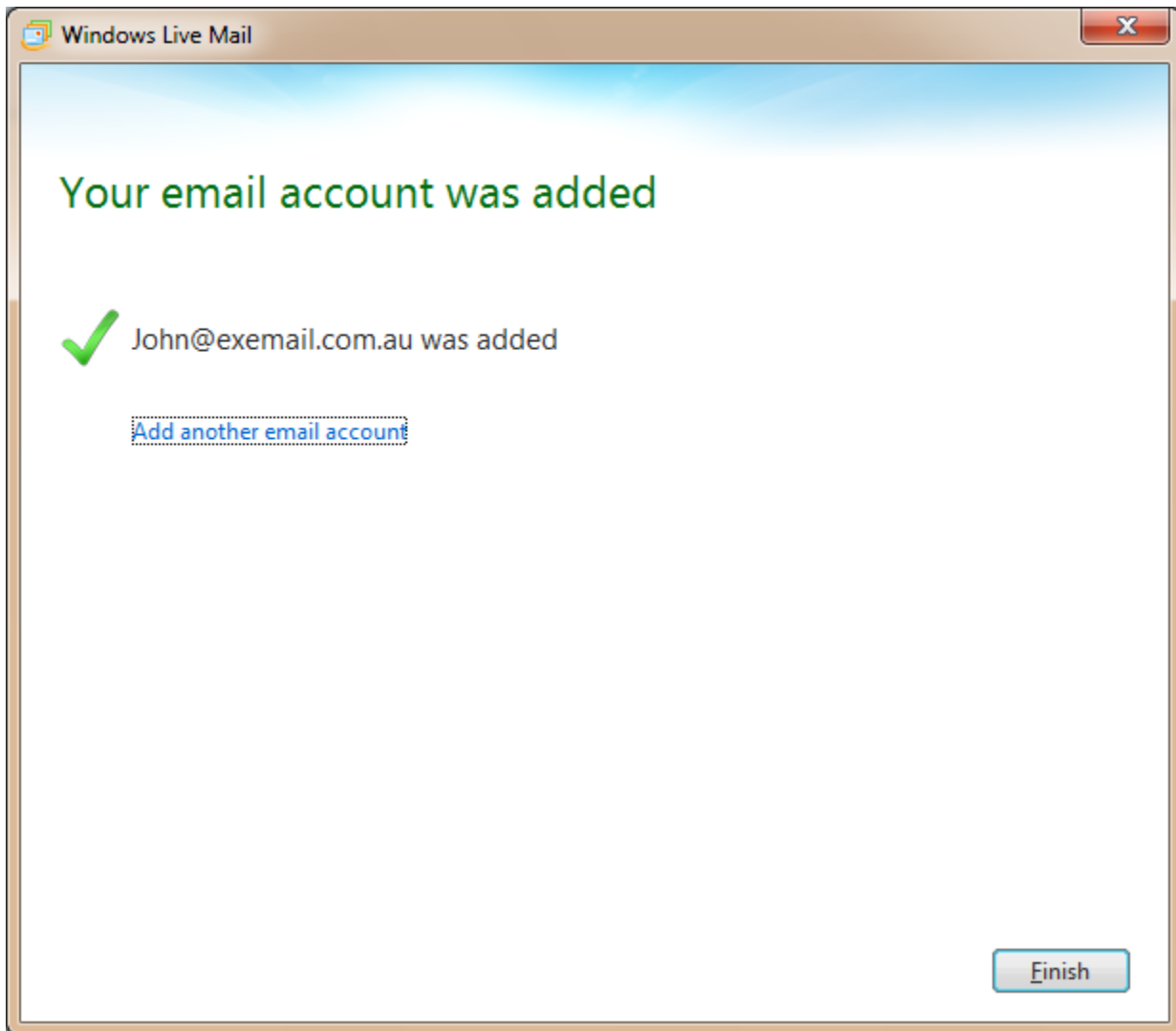
Enter in the 'Server address' field under 'Outgoing server information' smtp.(your state).exemail.com.au (2)

Make sure you enter complete email address in the 'Logon user name' field. (3)

The screenshot shows the 'Configure server settings' dialog box in Windows Live Mail. The dialog is titled 'Configure server settings' and includes the instruction: 'If you don't know your email server settings, contact your ISP or network administrator.' The settings are organized into two columns: 'Incoming server information' and 'Outgoing server information'. In the 'Incoming server information' section, the 'Server type' is set to 'POP'. The 'Server address' field contains 'pop3.nsw.exemail.com.au' (marked with a '1'), and the 'Port' is '110'. There is an unchecked checkbox for 'Requires a secure connection (SSL)'. The 'Authenticate using' dropdown is set to 'Clear text'. The 'Logon user name' field contains 'john@exemail.com.au' (marked with a '3' and a blue arrow pointing to the text). In the 'Outgoing server information' section, the 'Server address' field contains 'smtp.nsw.exemail.com.au' (marked with a '2'), and the 'Port' is '25'. There are two checkboxes: 'Requires a secure connection (SSL)' (unchecked) and 'Requires authentication' (checked). At the bottom right, there are three buttons: 'Cancel', 'Back', and 'Next'.

Once you click on Next, you will get the following confirmation.

Click on Finish



You will see the personal folder as follows.

